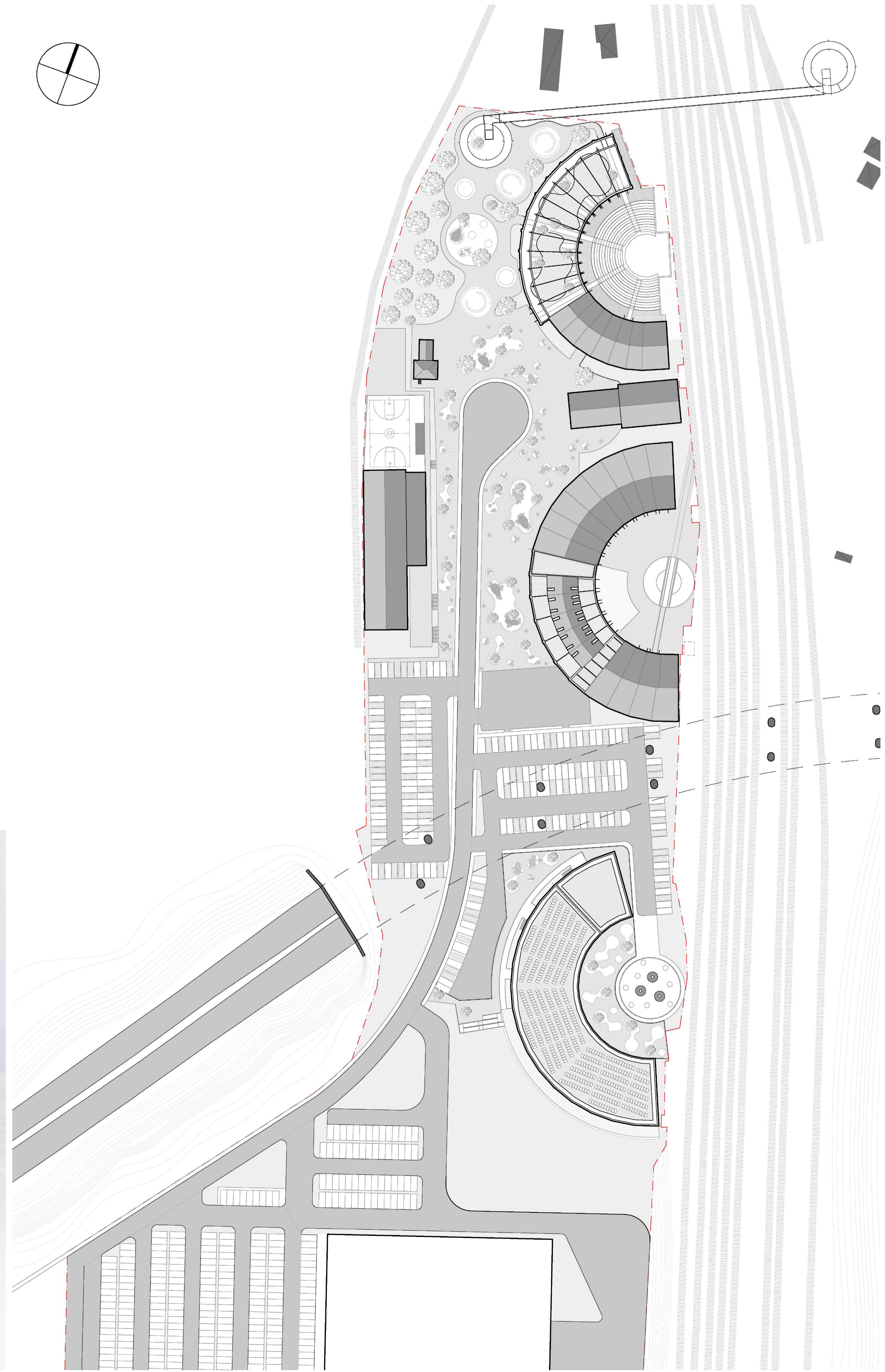
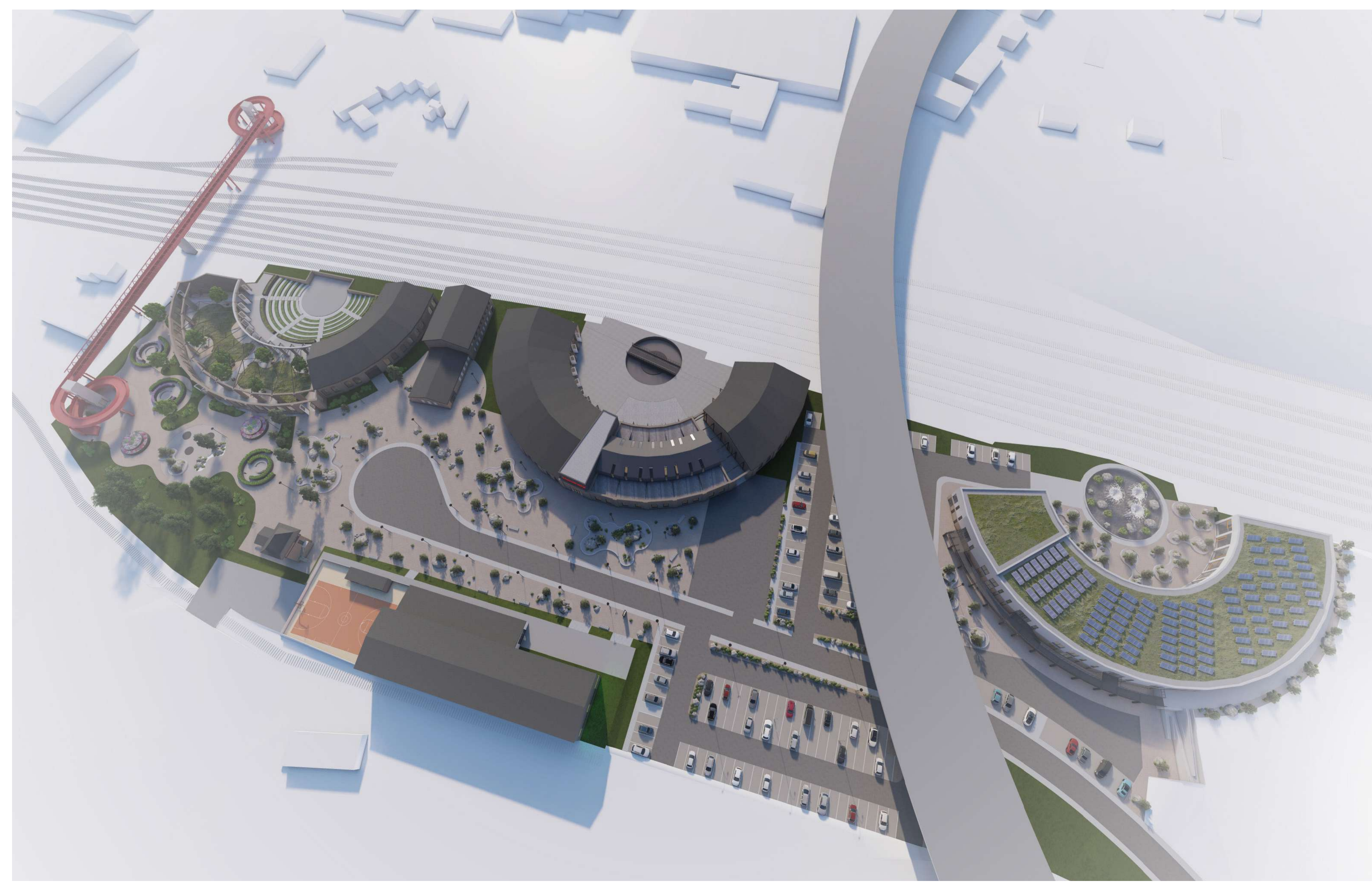
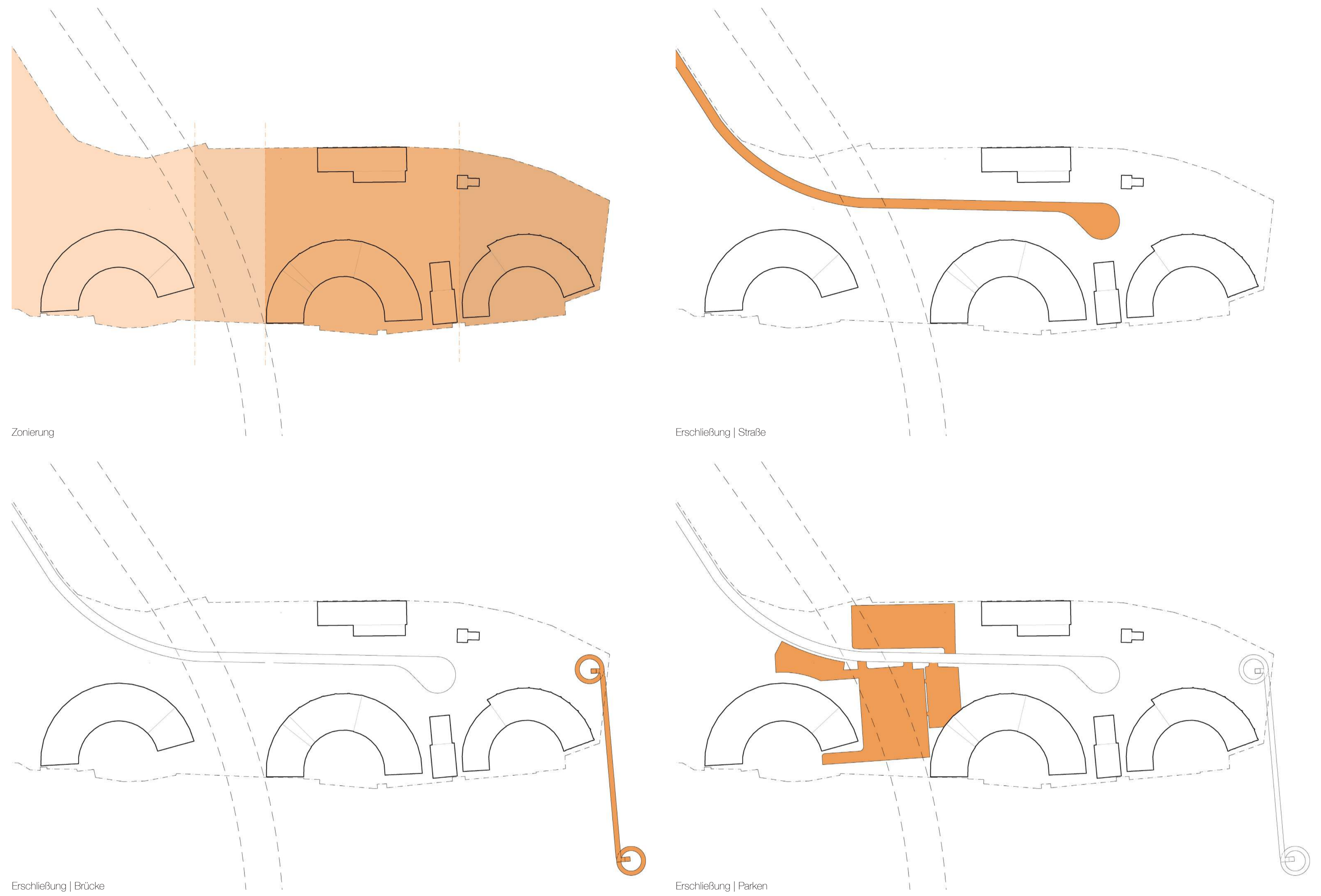
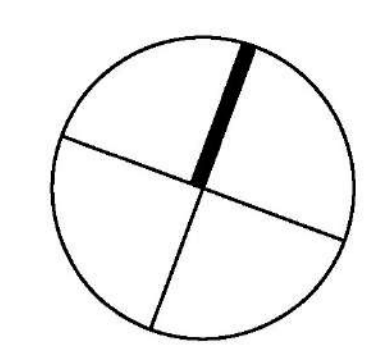
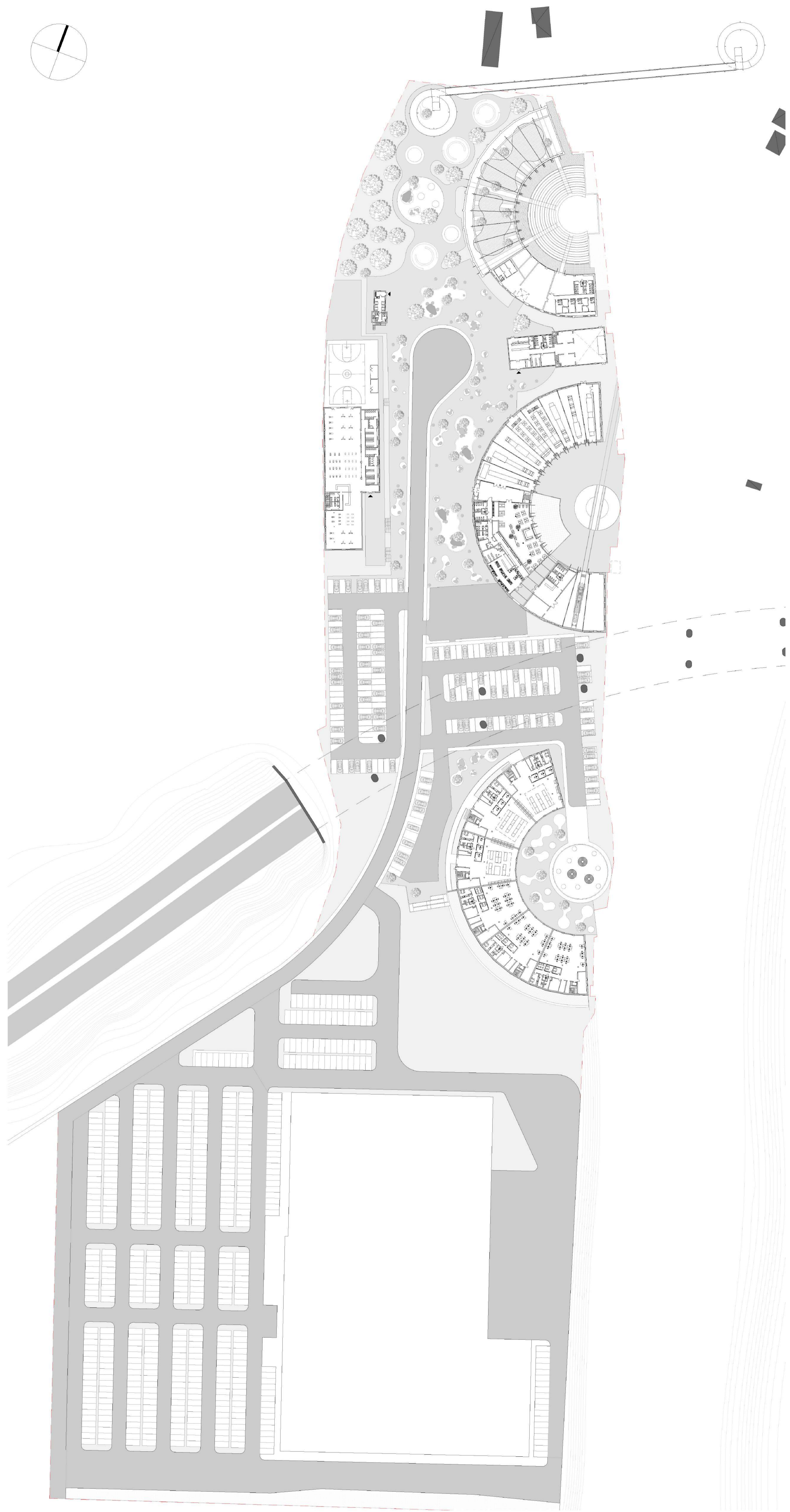


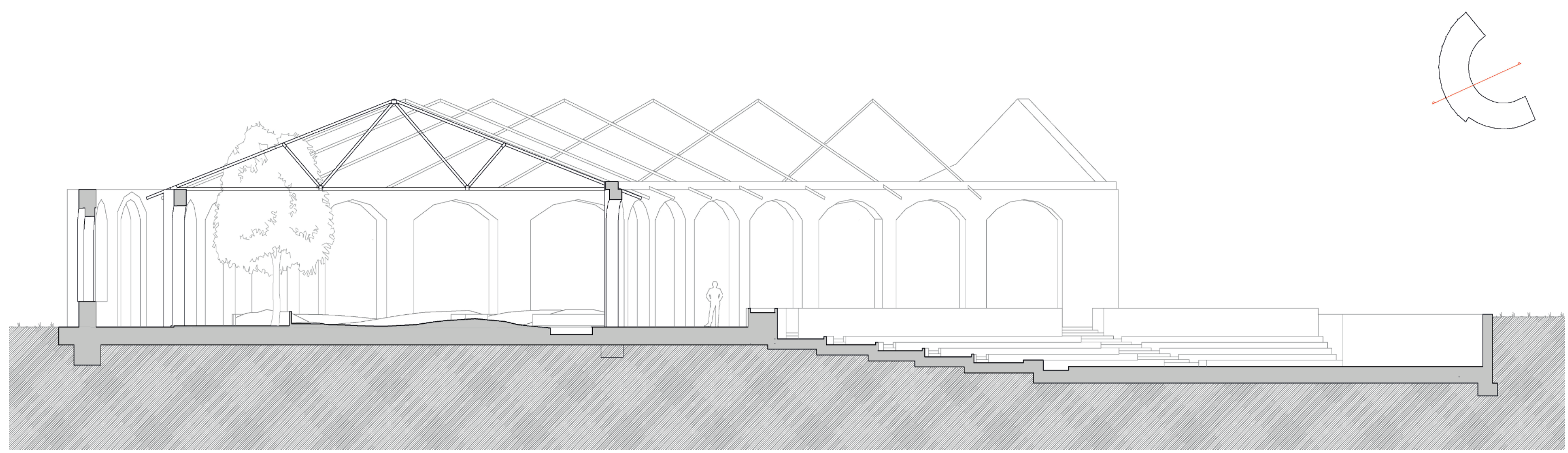
ALT UND RUND

Revitalisierung von drei Lokschuppen in Stralsund

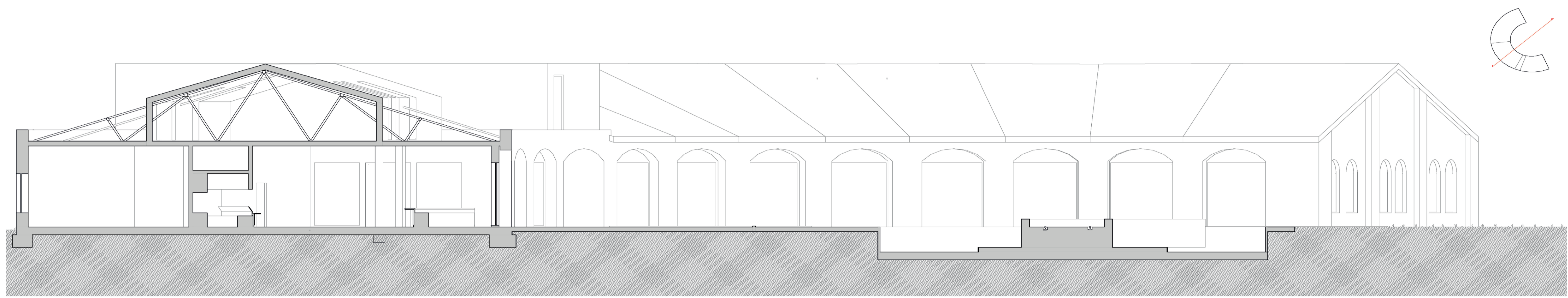
Hannes Conrad | 236744 | MA



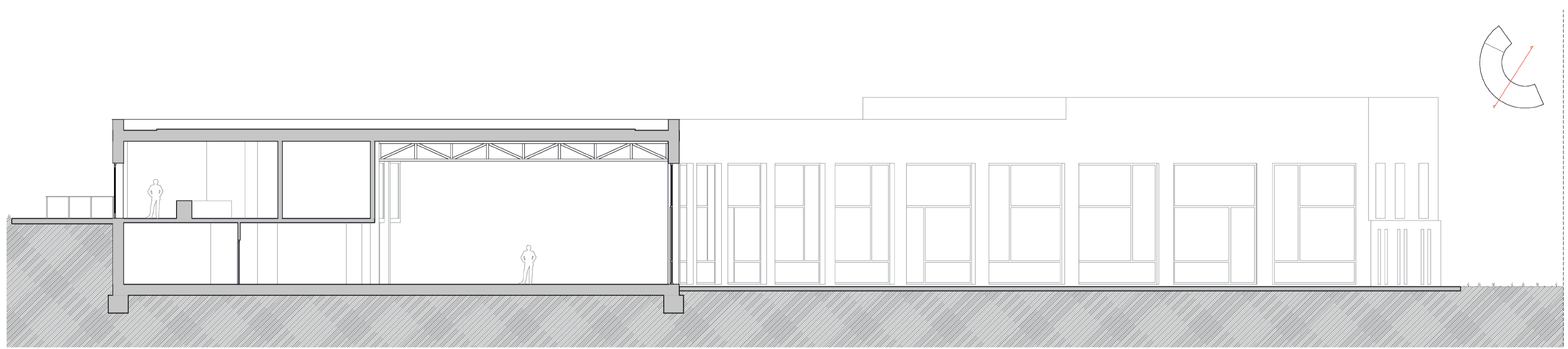




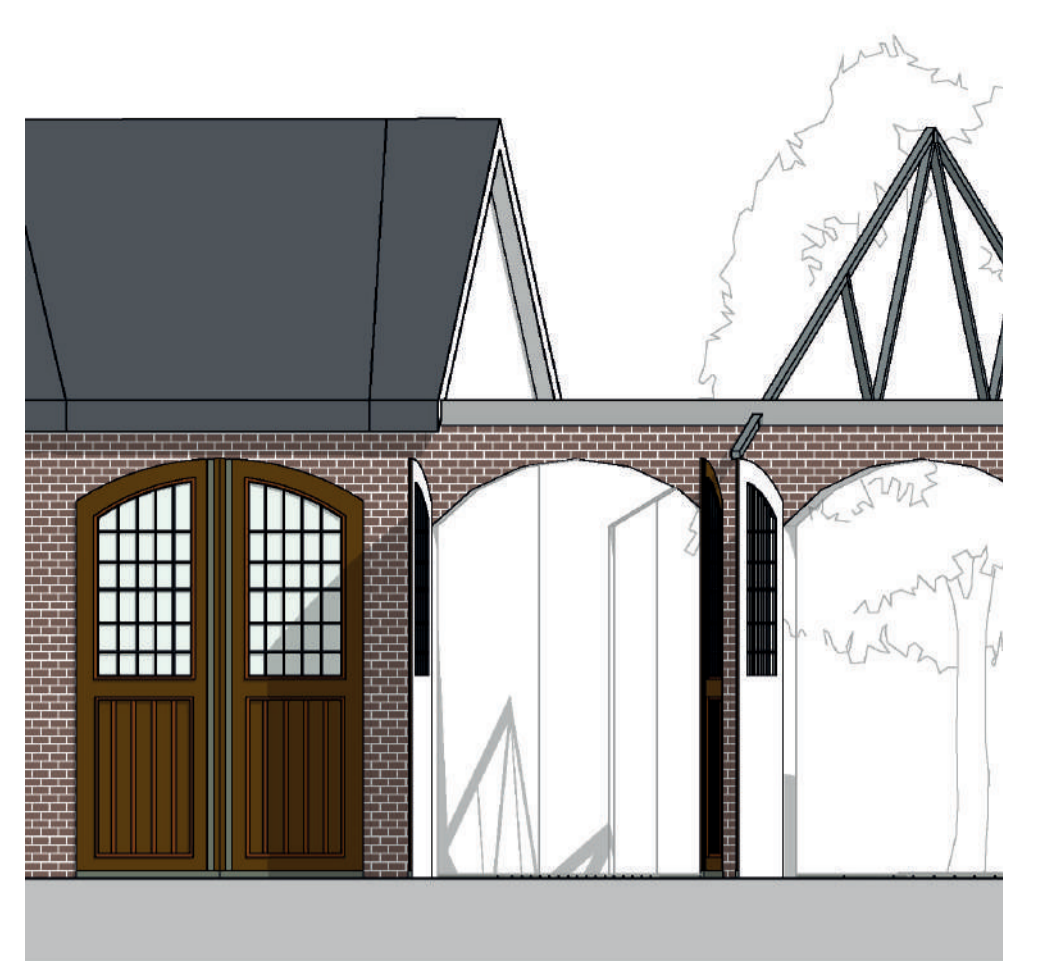
Schnitt Loksuppen 1



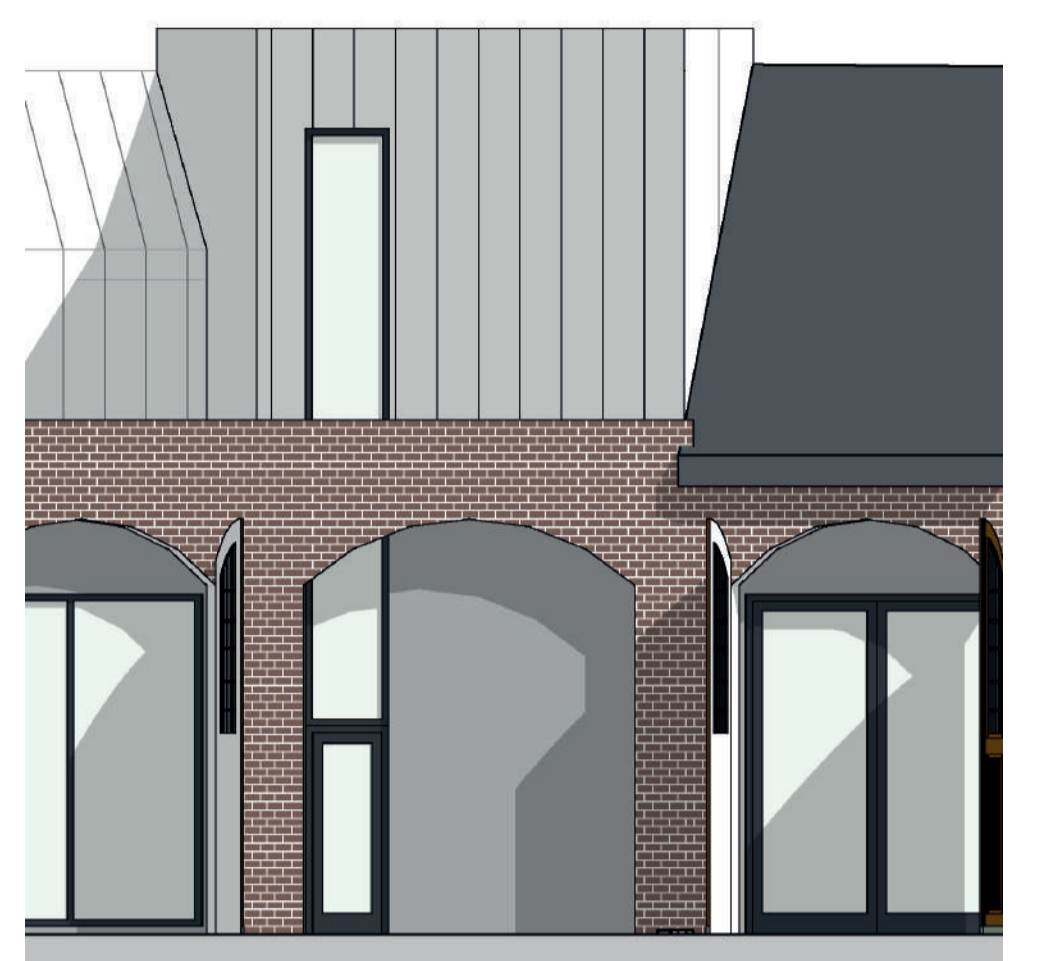
Schnitt Loksuppen 2



Schnitt Loksuppen 3



Ansicht Loksuppen 1



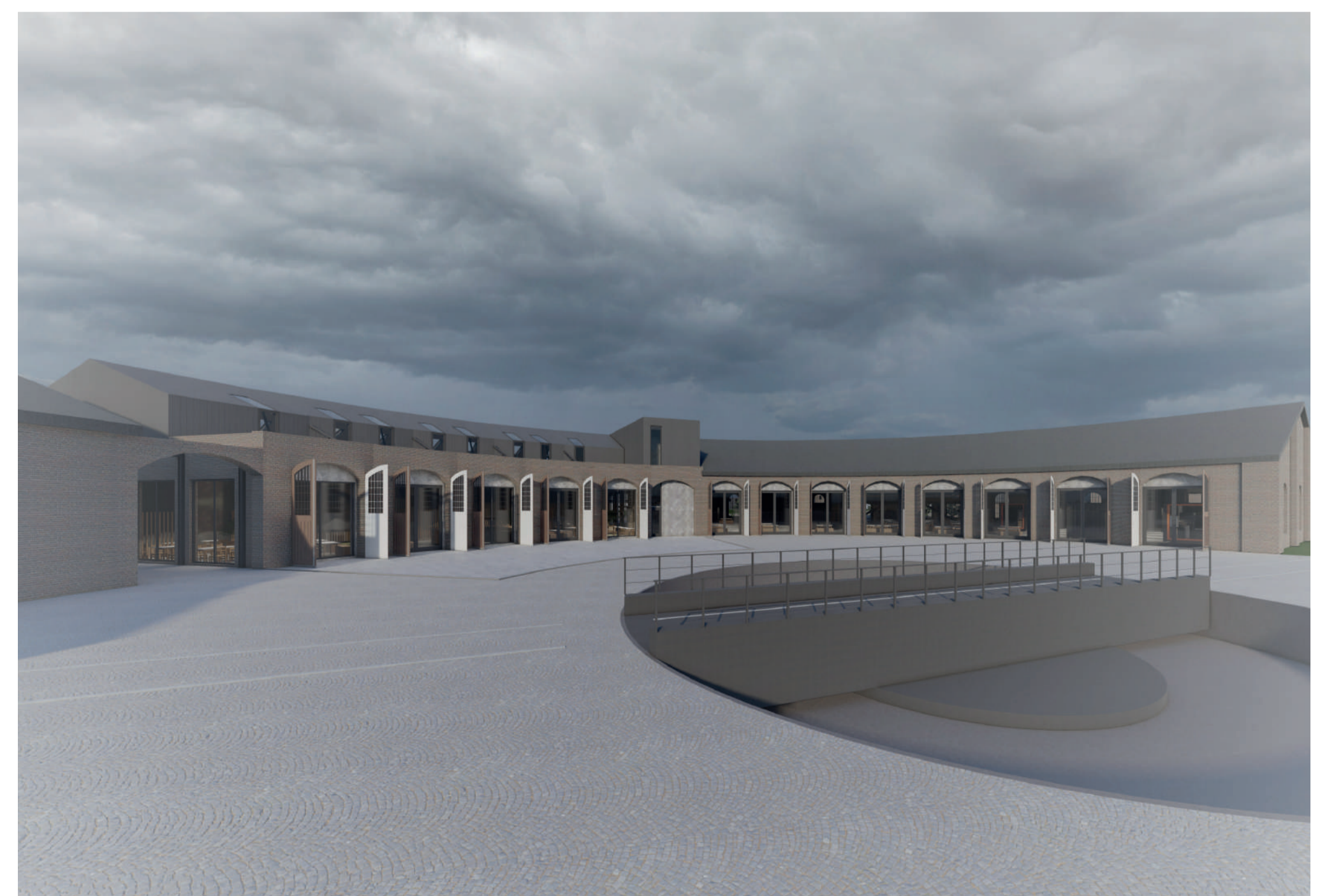
Ansicht Loksuppen 2



Ansicht Loksuppen 3



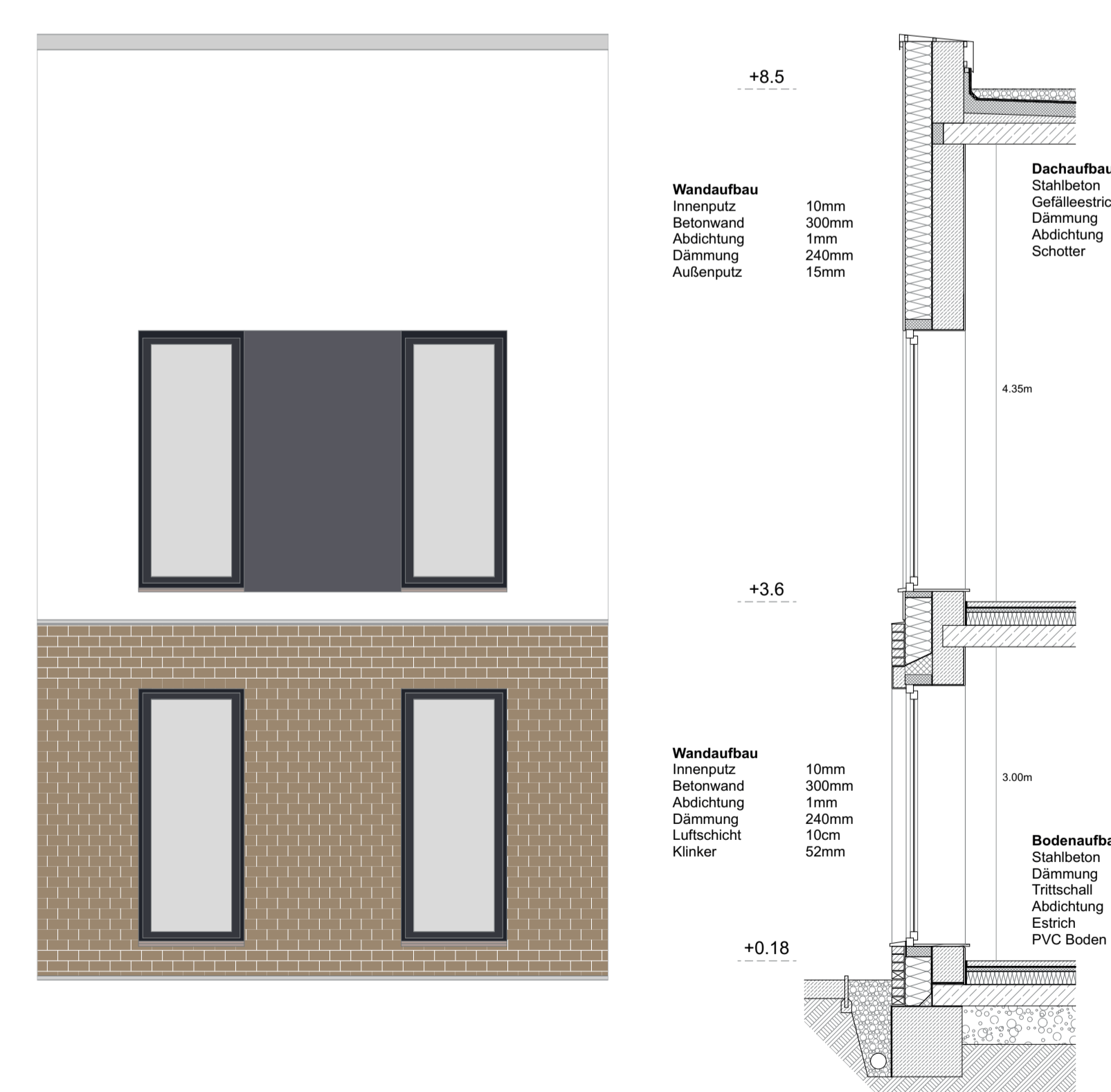
Innenhof Loksuppen 1



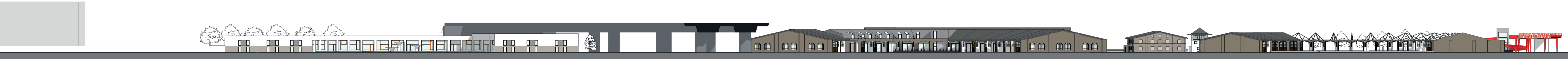
Innenhof Loksuppen 2

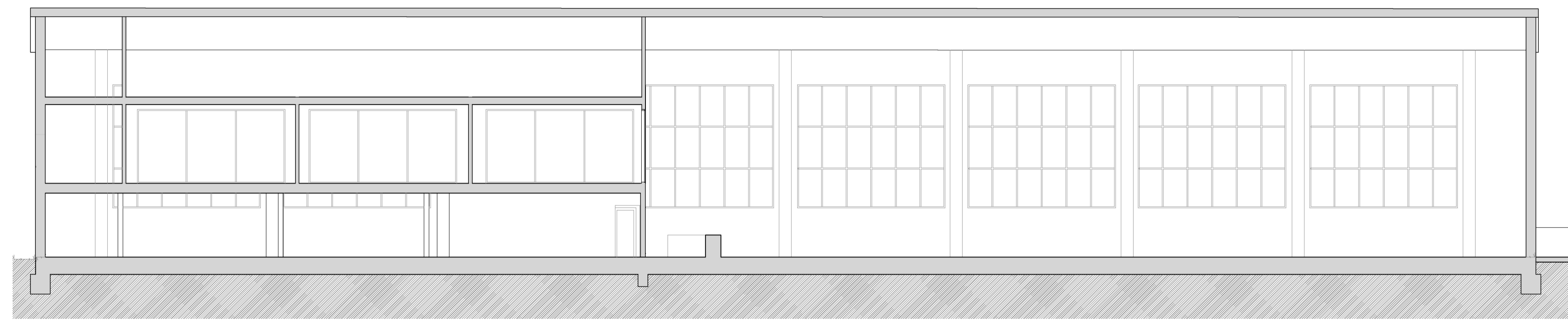


Innenhof Loksuppen 3

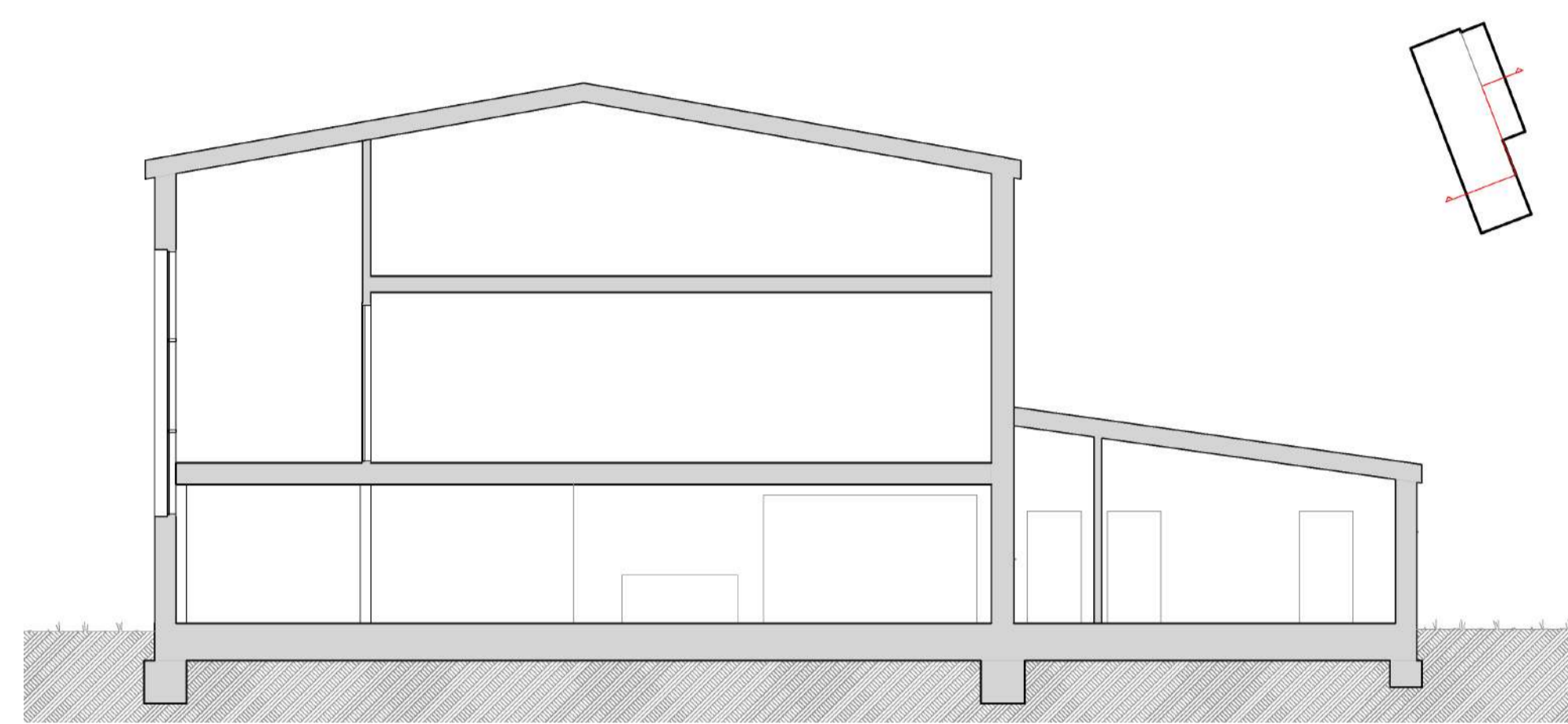


Fassadenschnitt





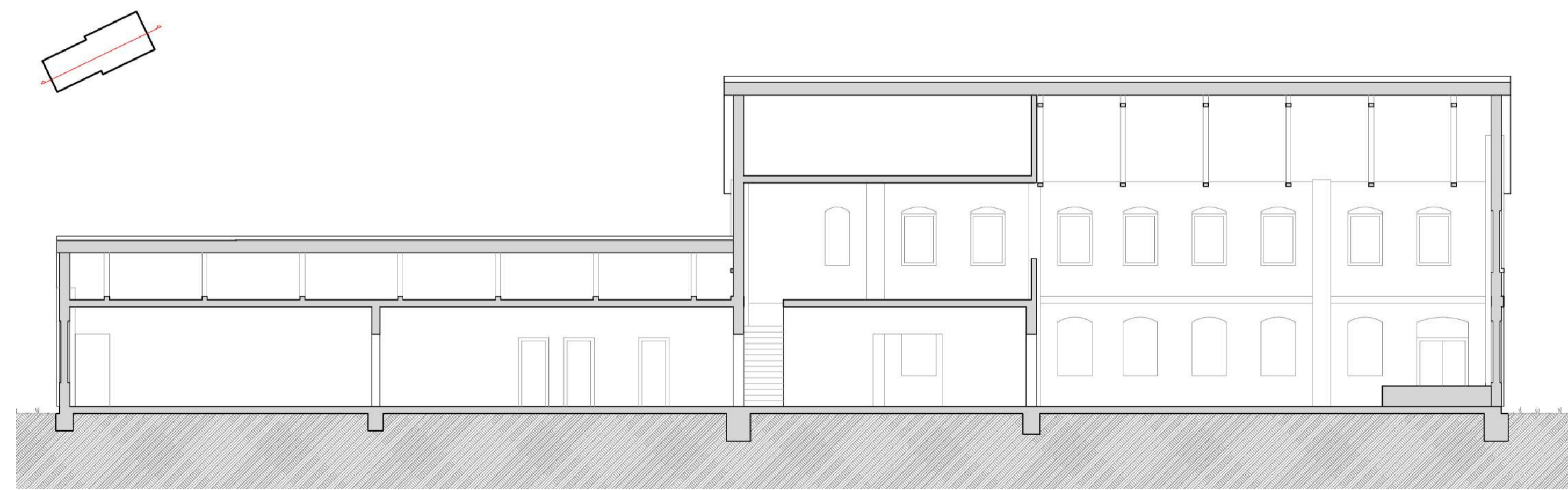
Schnitt Wartungshalle | längs



Schnitt Wartungshalle | quer



Schnitt Stelwerk



Schnitt Verwaltungsgebäude

